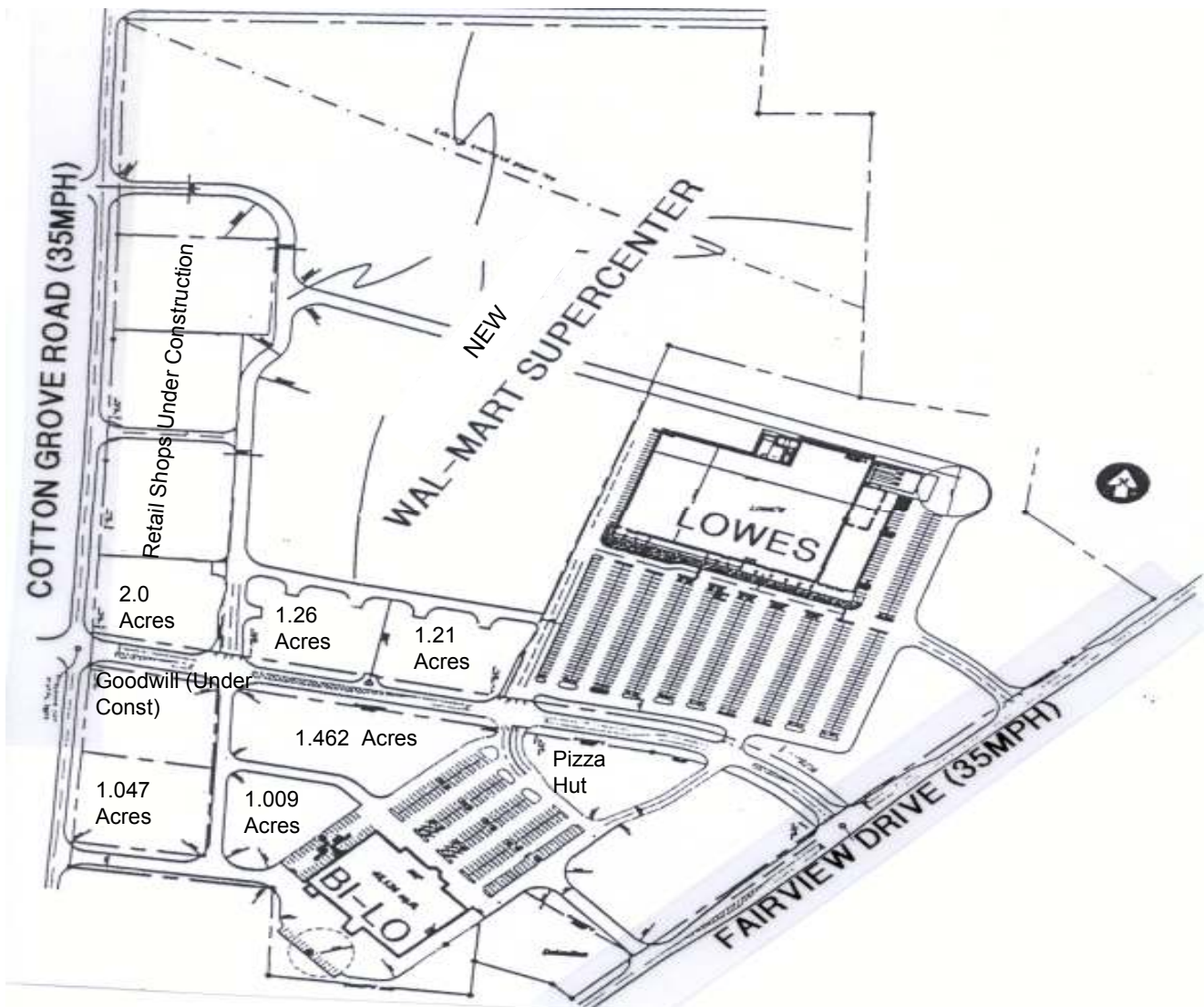


Lexington, NC

Cotton Grove Road and Fairview Drive



New regional retail location for Davidson County, NC with existing Lowe's Home Center, and new Wal-Mart Supercenter. Regional Access from I-85 and Business I-85 onto Cotton Grove Road and Fairview Drive. Zoned Commercial with utilities to the property lines. Available in 1.0 to 2.0 acre parcels for Build-to-Suit, Sale, or Ground Lease.

Available for Sale, Ground Lease or Build to Suit

For More Information Please Contact - Tele: 336-386-9790 - Fax: 336-386-9785 - www.crown-companies.com

Available for Sale, Ground Lease or Build to Suit

